



Sliding Shoe M8



Sliding Shoe M10

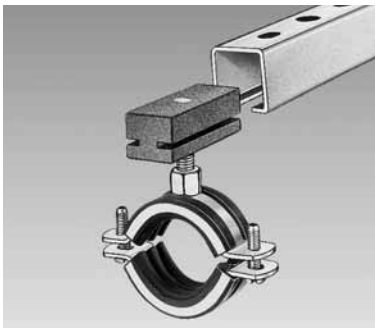
MÜPRO SLIDING SHOE

ADVANTAGES

- Sliding distance limited only by the length of Support Channel Profile available
- The perfect solution for plastic pipes with large thermal expansion
- suitable for pipes mounted both from above & from below
- Also ideally suitable for vertical pipes
- Large pipework expansion in both axial and lateral directions can be accommodated in one assembly incorporating two Sliding Shoes, giving a low overall height of only 50mm (with profile 27/18)
- High load, non-abrasive Sliding Shoe made of ultramide, reinforced with glass fibre

APPLICATION

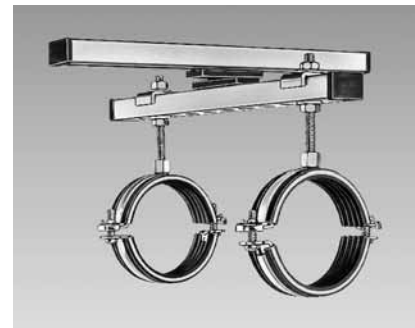
25



Sliding shoe M8, pipe suspended from above

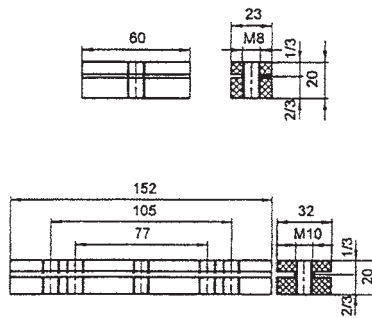


Sliding shoe M10, pipe supported from below



Expansion assembly for pipe movement in both axial and lateral directions

DATA



MÜPRO SLIDE GUIDE, zinc plated

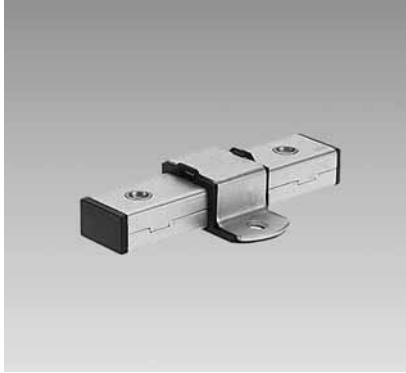
Part No.	Connecting thread	Suitable for profile	Pack size (piece)
10125	M8	27/18 and 28/30	50
10126	M10	38/40, 39/52	20

Mounting Instructions:

The threaded rods must be fully screwed through the Sliding Shoe.

The projecting threaded rod must not be longer than 70mm (M8) or 100mm (M10), respectively.

When fixing with two clamps the distance is selectable.

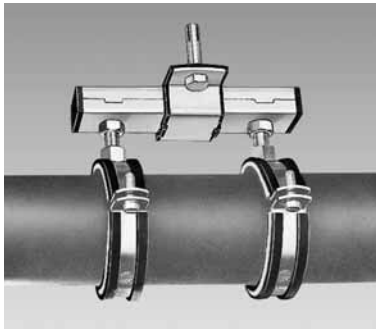


MÜPRO SLIDE GUIDE

ADVANTAGES

- Smooth operating Slide Guide for ceiling, wall or floor mounting
- Two pipe clamps prevent jamming and misalignment
- Large sliding distance up to 60mm
- The minimum overall height of only 25mm is useful when used in restricted conditions
- Variable thread length allows distance between pipe clamps and Slide Guide to be easily adjusted
- ideal for use with MÜPRO Support Channel Profiles, Wall Hanger Brackets and Cantilever Brackets
- Rigid construction but low overall height

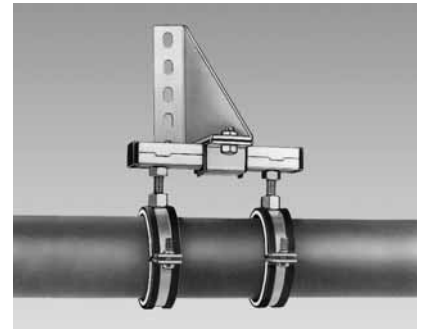
APPLICATION



suspension from ceiling using MÜPRO steel anchors



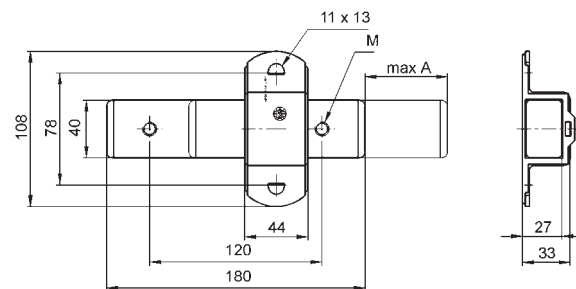
upright mounting with MÜPRO Support Channel Profiles



suspended from MÜPRO Cantilever Bracket

25

DATA



MÜPRO SLIDE GUIDE, zinc plated

Part No.	Connecting thread	Max. sliding distance A	Pack size (piece)
mm			
38881	M8	60	25
38903	M10	55	25
38911	M12	53	25

Temperature range: -40°C up to +100°C
Max. recommended loading: 1500N

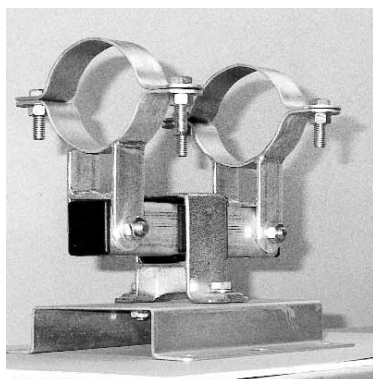


MÜPRO BOX SECTION HEAVY SLIDE GUIDE

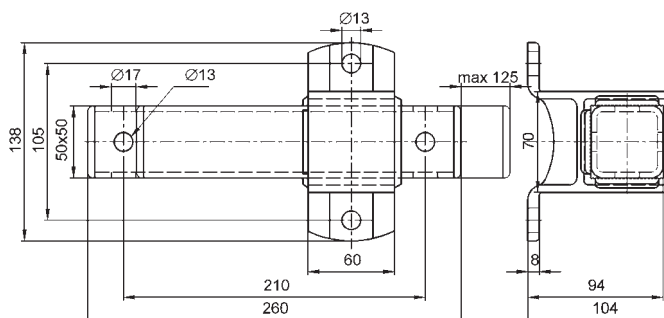
ADVANTAGES

- Smooth operating Slide Guide for heavy loads
- Large sliding distance up to 125mm for pipes with large thermal expansion
- Tilt-resistant load distribution in upright and suspended installation
- Variable thread length allows distance between pipe clamps and slide guide to be easily adjusted
- Two pipe clamps prevent jamming and misalignment
- Connection holes for both M12 and M16
- Also suitable for wall fixing with horizontal or vertical pipes

APPLICATION



DATA



MÜPRO BOX SECTION HEAVY SLIDE GUIDE, zinc plated

Part No.	Max. sliding distance A mm	Pack size (piece)
31003	125	1

Max. recommended tensile, compressive and axial loading: 7800N