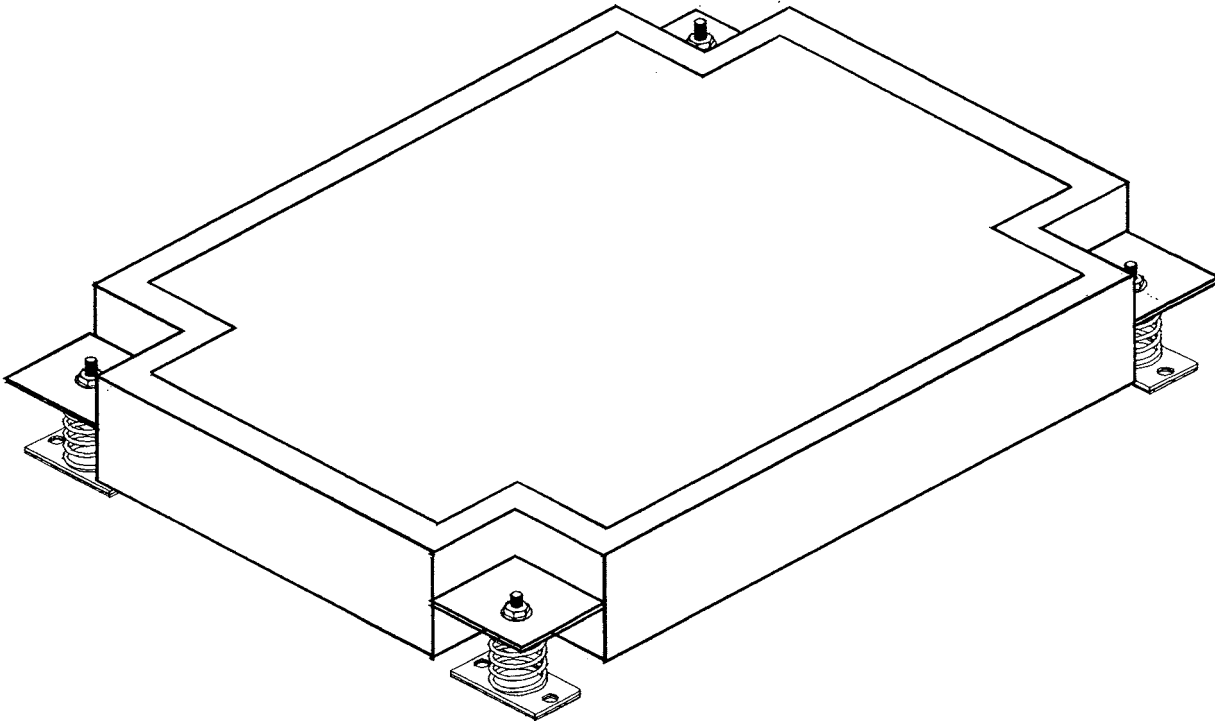


**CRESTA CFIB INERTIA
BASES WITH FM1-25
RANGE SPRING ISOLATORS**



31

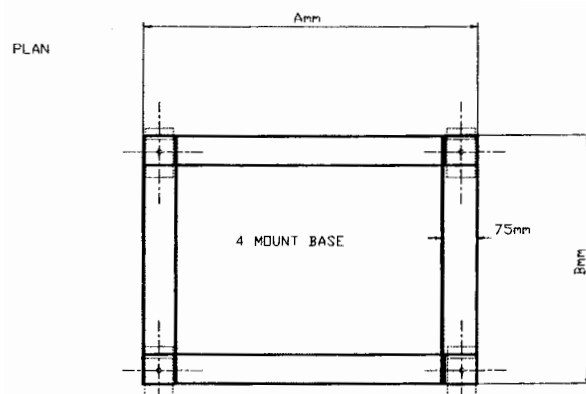
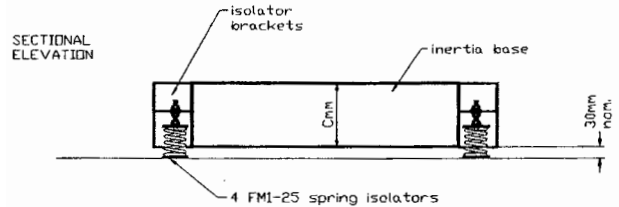
Cresta inertia bases are available to any required size or weight option or from standard size range shown below.

These inertia bases are supplied with Cresta FM1 spring isolators capable of 25mm static deflection under load.

Cresta inertia bases are available in the following standard base depths:-
150, 200, 250 & 300mm
with
4,6, & 8 mounting points
CFIB inertia bases are designed as a steel section prefabricated base suitable for site concrete fill by others.

These bases comprise an external steel peripheral section formed using a minimum of 3mm steel sheet and a 16 gauge steel bottom panel and mid point stiffening rods/mesh as necessary.

When selecting an inertia base to use with a pump set or other similar plant item the minimum inertia base weight to live plant weight ratio should be 1.5 : 1.0



STANDARD INERTIA BASE SIZE TABLE

Base ref	A	B	C	No. of Isolators	Base wt + conc.	Plant wt Max	Plant + base wt	Isolaotor ref	Colour
	mm	mm	mm		kg	kg	kg		
CFIB001	500	500	150	4	88	60	148	FM1-25-06	Pink
CFIB002	500	500	200	4	118	60	198	FM1-25-06	Pink
CFIB003	750	500	150	4	132	90	222	FM1-25-06	Pink
CFIB004	750	500	200	4	176	120	296	FM1-25-10	White
CFIB005	1000	500	150	4	176	120	296	FM1-25-10	White
CFIB006	1000	500	200	4	235	155	390	FM1-25-10	White
CFIB007	1000	500	250	4	295	195	490	FM1-25-14	Orange
CFIB008	750	750	150	4	198	132	330	FM1-25-10	White
CFIB009	750	750	200	4	265	175	440	FM1-25-14	Orange
CFIB010	750	1000	150	4	265	175	440	FM1-25-14	Orange
CFIB011	750	1000	200	4	350	235	535	FM1-25-14	Orange
CFIB012	750	1000	250	4	440	295	735	FM1-25-19	Yellow
CFIB013	750	1250	150	4	330	220	550	FM1-25-14	Orange
CFIB014	750	1250	200	4	440	295	735	FM1-25-19	Yellow
CFIB015	750	1250	250	4	550	365	915	FM1-25-29	Green
CFIB016	750	1500	200	4	530	350	880	FM1-25-29	Green
CFIB017	750	1500	250	4	660	440	1100	FM1-25-29	Green
CFIB018	1000	1000	200	4	470	315	785	FM1-25-19	Yellow
CFIB019	1000	1000	250	4	585	390	975	FM1-25-29	Green
CFIB020	1000	1250	200	4	585	390	975	FM1-25-29	Green
CFIB021	1000	1250	250	4	735	490	1225	FM1-25-29	Green
CFIB022	1000	1500	200	4	705	470	1175	FM1-25-29	Green
CFIB023	1000	1750	200	6	825	550	1375	FM1-25-29	Green
CFIB024	1000	1750	250	6	1030	685	1715	FM1-25-29	Green
CFIB025	1000	2000	200	6	940	625	1565	FM1-25-29	Green
CFIB026	1000	2000	250	6	1175	785	1960	FM1-25-40	Blue
CFIB027	1250	1500	200	4	880	585	1465	FM1-25-40	Blue
CFIB028	1250	1500	250	4	1120	740	1860	FM1-25-46	Brown
CFIB029	1250	1750	200	6	1030	685	1715	FM1-25-29	Green
CFIB030	1250	1750	250	6	1300	860	2160	FM1-25-40	Blue
CFIB031	1250	2000	200	6	1175	785	1960	FM1-25-40	Blue
CFIB032	1250	2000	250	6	1465	975	2440	FM1-25-40	Blue
CFIB033	1500	1500	200	4	1055	700	1755	FM1-25-46	Brown
CFIB034	1500	1500	250	4	1325	885	2210	FM1-25-57	Grey
CFIB035	1500	1750	250	6	1545	1030	2575	FM1-25-46	Brown
CFIB036	1500	1750	300	6	1850	1235	3085	FM1-25-57	Grey
CFIB037	1500	2000	250	8	1765	1175	2940	FM1-25-40	Blue
CFIB038	1500	2000	300	8	2115	1410	3523	FM1-24-46	Brown
CFIB039	1750	1750	250	8	1800	1200	3000	FM1-25-40	Blue
CFIB040	1750	1750	300	8	2160	1440	3600	FM1-25-46	Brown
CFIB041	1750	2000	250	8	2055	1370	3425	FM1-25-46	Brown
CFIB042	1750	2000	300	8	2465	1645	4110	FM1-25-57	Grey
CFIB043	2000	2000	250	8	2350	1565	3915	FM1-25-57	Grey
CFIB044	2000	2000	300	8	2820	1880	4700	FM1-25-57	Grey