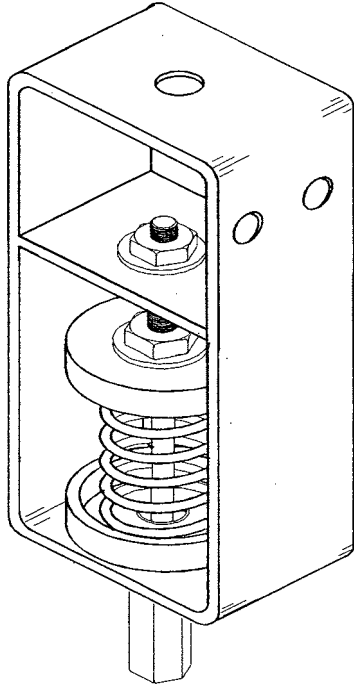


**CRESTA  
RH1-25 RANGE  
RESTRAINED HEIGHT  
SINGLE SPRING HANGERS**



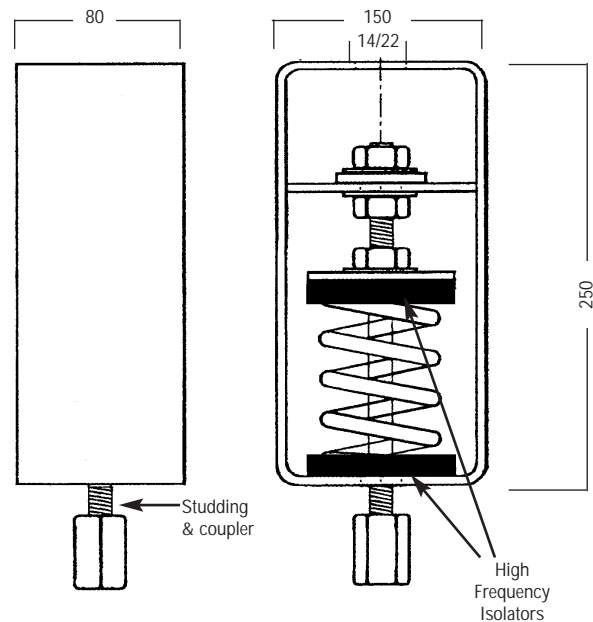
Hanger Reference	Spring Reference	Colour Code	Design rated load	Deflection at design load	Threaded
			kg	mm	
RH1-25	04	Red	40	25	M12
	06	Pink	60	25	M12
	10	White	100	25	M12
	14	Orange	140	25	M12
	19	Yellow	190	25	M12
	29	Green	290	25	M12
	40	Blue	400	25	M16
	46	Brown	460	25	M16
	57	Grey	575	25	M20
	75	Black	750	25	M20
	95	Purple	950	25	M20

Refer to Spring deflection chart for further details on page 31/06

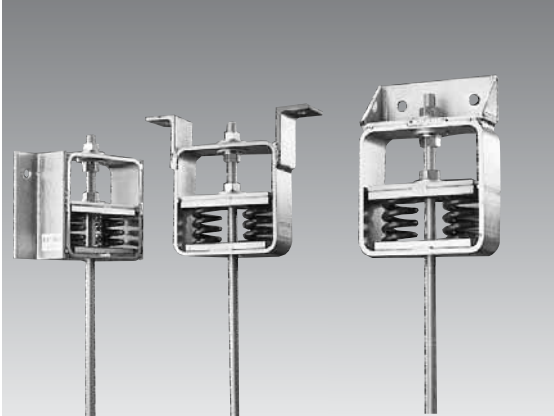
The Cresta RH1-25 range of spring isolators incorporates the following design features:-

- Laterally stable 25mm static deflection at design load helical steel springs
- Minimum 50% overload capacity.
- A wide range of spring loads is available to suit most applications.
- High frequency base pad isolation.
- Special restrained level feature, which allows constant pipe datum plane irrespective of dry/wet pipe loads.

Cresta sales staff can offer a selection service for spring hangers for suspended pipe systems. Full pipe weight, type and nature of support structure and design requirements will be necessary to facilitate selection.



**CRESTA  
RH2-25 RANGE HEAVY DUTY  
RESTRAINED HEIGHT DOUBLE  
SPRING HANGERS**



Hanger Reference	Spring Reference	Colour Code	Design rated load	Deflection at design load	Threaded
			kg	mm	
RH2-25	40	Blue	800	25	M20
	46	Brown	920	25	M20
	57	Grey	1150	25	M24
	75	Black	1500	25	M24
	95	Purple	1900	25	M24

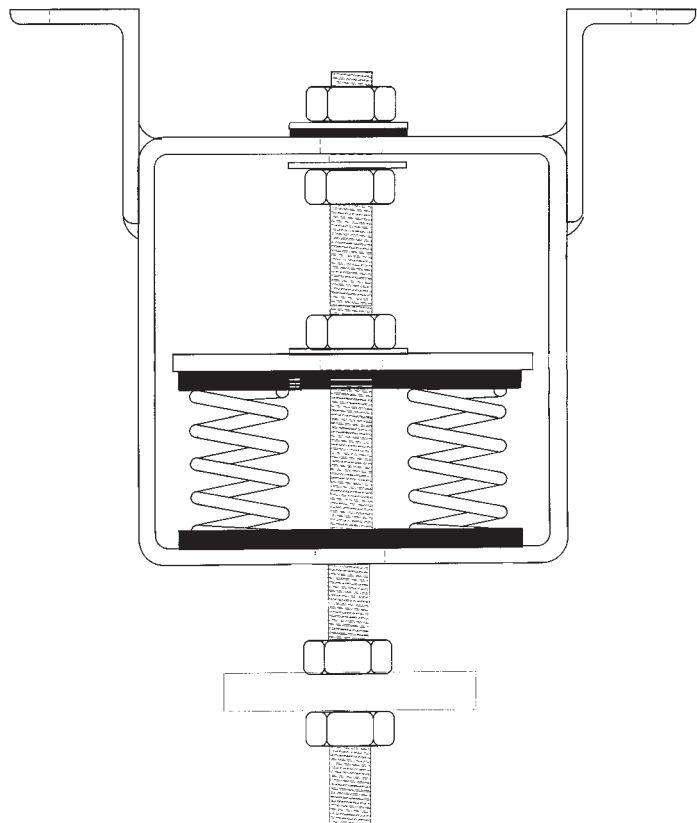
Refer to Spring deflection chart for further details on page 31/06

The Cresta RH2-25 range of spring isolators incorporates the following design features:-

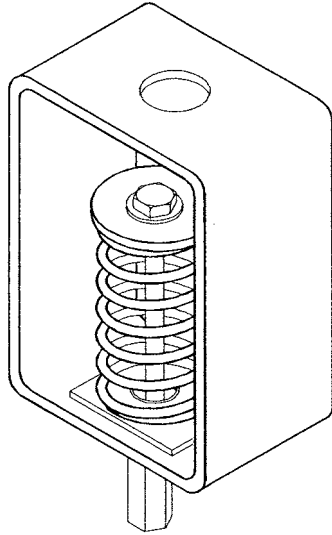
- Laterally stable 25mm static deflection at design load helical steel springs
- Minimum 50% overload capacity.
- A wide range of spring loads is available to suit most applications.
- High frequency base pad isolation.
- Special restrained level feature, which allows constant pipe datum plane irrespective of dry/wet pipe loads.

Cresta sales staff can offer a selection service for spring hangers for suspended pipe systems. Full pipe weight, type and nature of support structure, and design requirements will be necessary to facilitate selection.

This product is designed on a bespoke basis to suit the hanging requirement necessary for the site application.



**CRESTA  
H1-25 RANGE  
SPRING HANGERS**



Hanger Reference	Spring Reference	Colour Code	Design rated load kg	Deflection at design load mm	Threaded
H1-25	04	Red	40	25	M12
	06	Pink	60	25	M12
	10	White	100	25	M12
	14	Orange	140	25	M12
	19	Yellow	190	25	M12
	29	Green	290	25	M12
	40	Blue	400	25	M16
	46	Brown	460	25	M16
	57	Grey	575	25	M20
	75	Black	750	25	M20
	95	Purple	950	25	M20

Refer to Spring deflection chart for further details on page 31/06

The Cresta H1-25 range of spring isolators incorporates the following design features:-

- Laterally stable helical steel springs
- Capable of 25mm static deflection at design load.
- Minimum 50% overload capacity.
- A wide range of spring loads is available to suit most applications.
- High frequency base pad isolation.

Cresta sales staff can offer a selection service for spring hangers for suspended pipe systems or mechanical services plant items.

Full plant details such as plant weight and running speed as well as the type and nature of support structure and design requirements will be necessary to facilitate selection.

