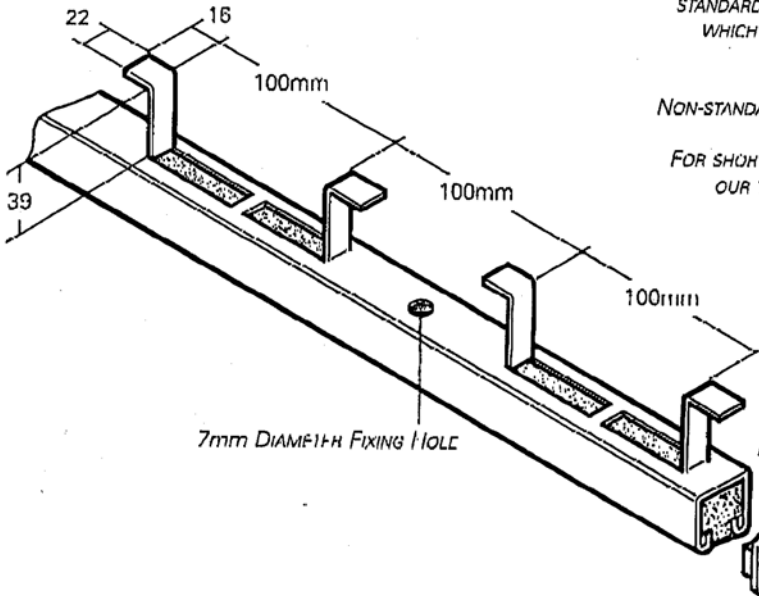


**CONCRETE INSERTS (MANUFACTURED TO ORDER)**

**S1100** 41 x 41 x 2.5g WEIGHT- 2.64 Kg/M  
**S1200** 41 x 21 x 2.5g WEIGHT- 1.84 Kg/M



CONCRETE INSERTS ARE AVAILABLE IN STANDARD LENGTHS OF 3 AND 6 METRES WHICH ARE SUPPLIED COMPLETE WITH POLYSTYRENE INSULATION AND END CAPS IN PLACE. NON-STANDARD LENGTHS CAN BE SUPPLIED IN INCREMENTS OF 200mm. FOR SHORTER LENGTHS, PLEASE CONSULT OUR TECHNICAL/SALES DEPARTMENT.

**CONCRETE INSERTS:-**

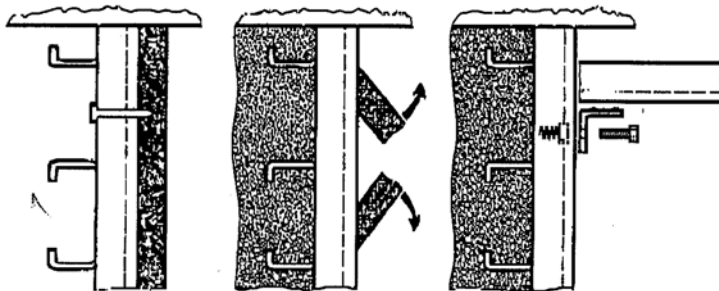
**MATERIAL:**  
 BS 1449 HR4 PO Z25  
 EN10147:1992 FE  
 250-G275 PG  
 BS 1449 PART 2  
 ROLLING TOLERANCES TO  
 BS 2994  
 CONCRETE STRENGTH:-  
 32N/M<sup>2</sup>

**FINISH:**  
 STANDARD FINISH:  
 HDG = BS 729  
 PG = PRE GALVANISED  
 BS2989

OTHER FINISHES AND MATERIALS AVAILABLE UPON REQUEST.

**END CAP**

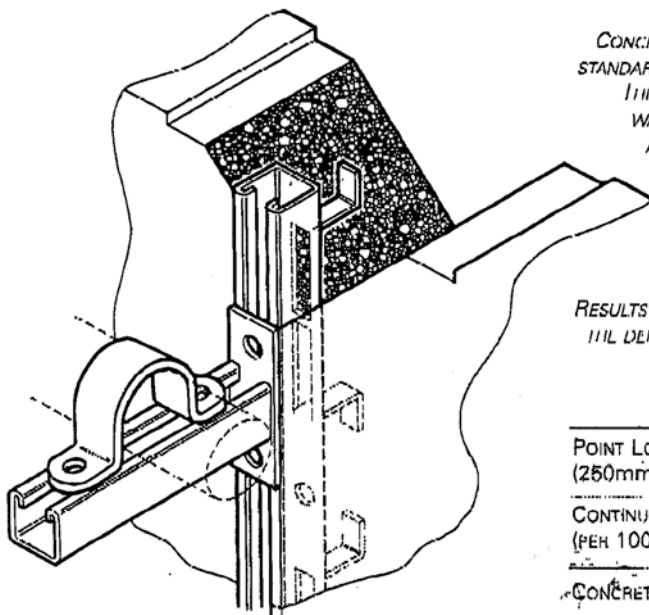
IF SITE INSTALLATION REQUIRES CONCRETE INSERT TO BE CUT END CAPS MUST BE RE-INSERTED AT EACH END.



NAIL TO SHUTTERING BEFORE POURING

REMOVE POLYSTYRENE

INSERT CHANNEL NUT AND SECURE BRACKET



CONCRETE INSERTS ARE MANUFACTURED FROM STANDARD CHANNEL SECTIONS S100 AND S200. THE INCLUSION OF CONCRETE INSERTS INTO WALLS, FLOORS, CEILINGS AND DUCTS ETC. AT THE INITIAL STAGES OF CONSTRUCTION PROVIDES A FLUSH SURFACE FOR FIXING AND SUPPORTING ELECTRICAL AND MECHANICAL SERVICES.

**RECOMMENDED LOADINGS**

RESULTS PREPARED FROM TESTS CARRIED OUT BY THE DEPARTMENT OF CIVIL ENGINEERING AT THE UNIVERSITY OF BIRMINGHAM

	S1200	S1100
POINT LOAD (250mm CENTRES)	550 Kgs	750 Kgs
CONTINUOUS LOAD (PER 1000mm)	2200 Kgs	3000 Kgs

CONCRETE STRENGTH 32MN/M<sup>2</sup>

DRAWINGS NOT TO SCALE  
 ALL DIMENSIONS IN mm