

|   | <b>Section</b> |
|---|----------------|
| <b>CRESTA TRADITIONAL CLIPS,</b> Fig 1, 1ES ....                      | <b>05</b>      |
| <b>LIGHTWEIGHT CLIPS,</b> MÜPRO, crestalite, Talon ....               | <b>10</b>      |
| <b>THREADED COMPONENTS</b> U Bolts, Reducers, Link eyes ....          | <b>15</b>      |
| <b>INSULATION SUPPORT BLOCKS</b> Wood, Phenolic ....                  | <b>20</b>      |
| <b>ROLLERS, SLIDE GUIDES &amp; ANCHORS</b>                            | <b>25</b>      |
| <b>BRACKETS</b> Cantilever, Cleats, Gang Hangers ....                 | <b>30</b>      |
| <b>ACOUSTIC &amp; VIBRATION ISOLATION PRODUCTS</b>                    | <b>31</b>      |
| <b>STRUT SYSTEMS</b> Channel Sections and Accessories ....            | <b>35</b>      |
| <b>FASTENERS &amp; FIXINGS</b> Anchors, Purlin clips, Lindaptors .... | <b>40</b>      |
| <b>NUT BOLTS WASHERS</b>  | <b>45</b>      |
| <b>PLUMBING TUBE &amp; FITTINGS</b> Tundishes, Dosing pots ....       | <b>50</b>      |
| <b>TOOLS</b> Power tools, Hand tools, Hole saws ....                  | <b>55</b>      |
| <b>STEEL SECTIONS</b> Channel, Flat bar, Beams ....                   | <b>60</b>      |
| <b>SUNDRIES</b> Gloves, Tapes, Ancillaries, and Specials ....         | <b>65</b>      |
| <b>FABRICATION</b> Bespoke Manufacture To Customer Designs ....       | <b>70</b>      |
| <b>FIRE PROTECTION</b> Fire Collars, Wraps, Mastic ....               | <b>85</b>      |
|   |                |
| <b>APPENDIX</b> Useful information ....                               |                |

Section 30



FIG 9-3009  
SINGLE GIRDER  
ANGLE



FIG 10-3010  
DOUBLE GIRDER  
ANGLE



FIG 11-3011  
ANGLE CLEATS



FIG 12-3012  
HOOK ON CLEATS

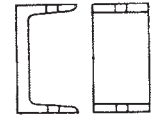


FIG 13-3013  
CHANNEL CLEATS

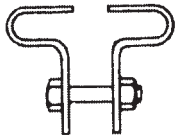


FIG 14-3014  
GIRDER  
CLAMPS



FIG 15-3015  
GIRDER FINGERS

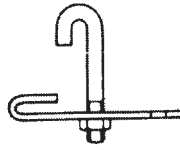


FIG 16-3016  
ANGLE FINGERS

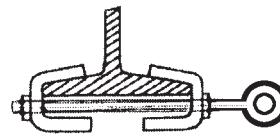


FIG 27-3027  
BEAM CLAMPS



FIG 28-3028  
CEILING BOX

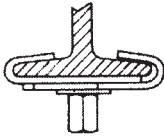


FIG 30-3030  
ADJUSTABLE  
GIRDER CLIP

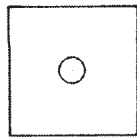


FIG 32-3032 &  
FIG 33-3033  
PLATE WASHERS &  
LINKS



FIG 34-3034  
GANG HANGER

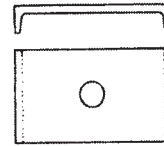


FIG 35-3035  
BRIDGE PIECES

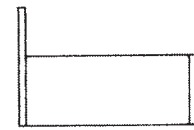


FIG 36-3036 & 36-3036A  
WALL GANG HANGER

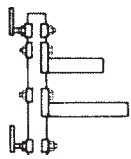


FIG 37-3037  
TRENCH GANG  
HANGER ASSEMBLY

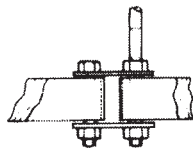


FIG 38-3038  
GANG HANGER  
CONNECTIONS

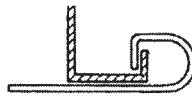


FIG 39-3039  
Z PURLIN CLIPS

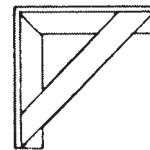


FIG 55-3055  
CANTILEVER  
BRACKETS

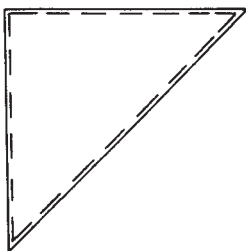


FIG 3060  
PLATE ADJUSTABLE  
ANGLE BRACKET

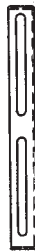


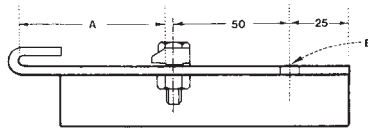
FIG 3065  
CEILING BRACKETS  
FOR DROP RODS



FIG 3066  
CEILING BRACKETS  
FOR DROP RODS

The 3009 FIG9 and the 3010 FIG10 are from a family of joist and girder brackets. Please contact our Sales office for further range details, mentioning the load to be carried, the configuration of the load to be supported and size of the beam to be fixed to. We will be happy to suggest some solutions.

**3009  
SINGLE GIRDER ANGLE / FIG 9**



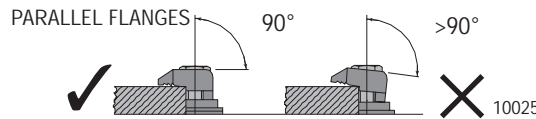
PLEASE CONTACT OUR SALES OFFICE FOR PRICES.

Manufactured from 50 x 50 x 6 angle iron with 12 mm Lindapter bolts and nuts  
**Standard finish:** Red Oxide  
Other sizes to order

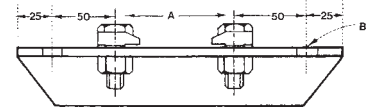
When ordering Girder Angle please specify  
'A' Joist width  
'B' Hole size required as shown above

PARALLEL OR TAPERED FLANGE  
If Parallel, specify flange thickness. If Tapered, specify flange angle

**INSTALLATION**



**3010  
DOUBLE GIRDER ANGLE / FIG 10**

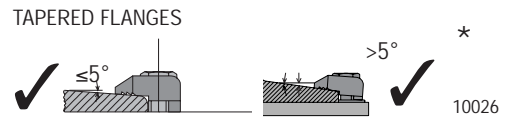


PLEASE CONTACT OUR SALES OFFICE FOR PRICES.

Manufactured from 50 x 50 x 6 angle iron with 12 mm Lindapter bolts and nuts  
**Standard finish:** Red Oxide  
Other sizes to order

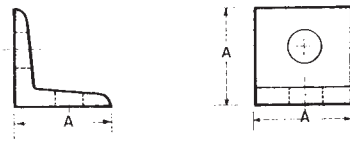
When ordering please specify  
'A' Joist width  
'B' Hole size required

PARALLEL OR TAPERED FLANGE  
If Parallel, specify flange thickness. If Tapered, specify flange angle



\*Between 6° and 8° slope types A&B Steelwork Fixings require a special tail length/packing combination which will allow the clamp to tilt back slightly. For applications above 8°, please see type LR

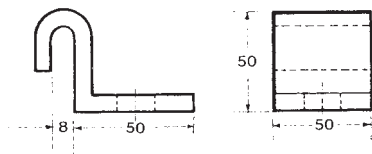
**3011  
ANGLE CLEAT / FIG 11**



| Part No. | Size No. | A   |
|----------|----------|-----|
|          |          | mm  |
| 1100001R | 1        | 40  |
| 1100002R | 2        | 50  |
| 1100003R | 3        | 70  |
| 1100004R | 4        | 80  |
| 1100005R | 5        | 100 |

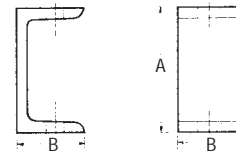
Please specify hole size when ordering  
**Standard finish:** Red Oxide  
Also available galvanised

**3012  
HOOK ON CLEAT / FIG 12**



Please specify hole size when ordering  
One standard size only  
**Standard finish:** Red Oxide  
Also available galvanised

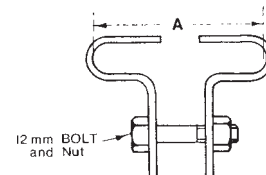
**z3013  
CHANNEL CLEAT / FIG 13**



| Part No. | Size No. | A   | B  |
|----------|----------|-----|----|
|          |          | mm  | mm |
| 1300001R | 1        | 76  | 38 |
| 1300002R | 2        | 80  | 45 |
| 1300003R | 3        | 102 | 51 |

Please specify hole size when ordering  
**Standard finish:** Red Oxide  
Also available galvanised

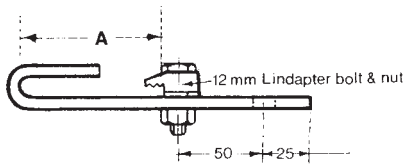
**3014  
GIRDER CLAMP / FIG 14**



| Part No. | Size No. | A   |
|----------|----------|-----|
|          |          | mm  |
| 1400001R | 1        | 76  |
| 1400002R | 2        | 114 |
| 1400003R | 3        | 127 |
| 1400004R | 4        | 152 |

Please specify hole size when ordering  
**Mat:** 50 x 6 Flat  
**Standard finish:** Red Oxide

3015  
GIRDER FINGER / FIG 15

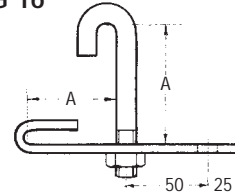


| Part No. | Size No. | A   |
|----------|----------|-----|
|          |          | mm  |
| 1500001R | 1        | 76  |
| 1500002R | 2        | 114 |
| 1500003R | 3        | 127 |
| 1500004R | 4        | 152 |

Please specify hole size when ordering  
**Mat:** 50 x 6 Flat  
**Standard finish:** Red Oxide

All Lindaptors should be ordered with at least 8.8 grade bolts

3016  
ANGLE FINGER / FIG 16

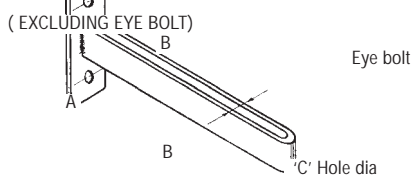


| Part No. | Size No. | A   | Bolt |
|----------|----------|-----|------|
|          |          | mm  |      |
| 1600001R | 1        | 50  | M10  |
| 1600002R | 2        | 70  | M10  |
| 1600003R | 3        | 80  | M10  |
| 1600004R | 4        | 100 | M10  |

Please specify hole size when ordering  
**Mat:** 50 x 6 Flat  
**Standard finish:** Red Oxide

30

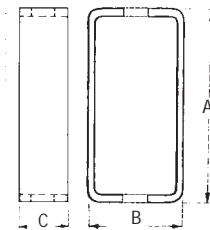
3027  
BEAM CLAMP / FIG 27



| Part No. | Size No. | Material Size | A  | B  | C  |
|----------|----------|---------------|----|----|----|
|          |          | mm            | mm | mm | mm |
| 2700001R | 1        | 30 X 3        | 22 | 22 | 12 |
| 2700002R | 2        | 40 X 6        | 22 | 25 | 14 |

**Standard finish:** Red oxide  
 Excludes Eye bolt detail in Section 15

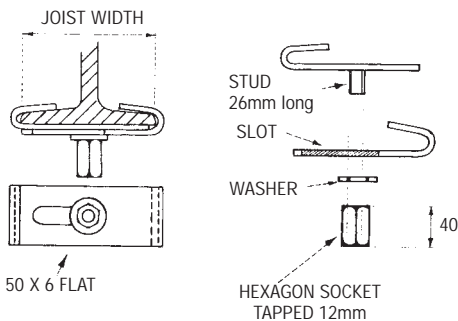
3028  
CEILING BOX / FIG 28



| Part No. | Size No. | A Size | B  | C  |
|----------|----------|--------|----|----|
|          |          | mm     | mm | mm |
| 2800001R | 1        | 80     | 40 | 40 |
| 2800002R | 2        | 100    | 50 | 40 |
| 2800003R | 3        | 120    | 60 | 50 |

Please specify hole size when ordering  
**Standard finish:** Red oxide

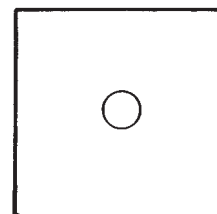
3030  
ADJUSTABLE GIRDER CLIP / FIG 30



| Part No. | Size No. | Joist Width |
|----------|----------|-------------|
|          |          | mm          |
| 3000001R | 1        | 75 - 125    |
| 3000002R | 2        | 125 - 200   |

**Standard finish:** Red oxide  
 Other sizes to order

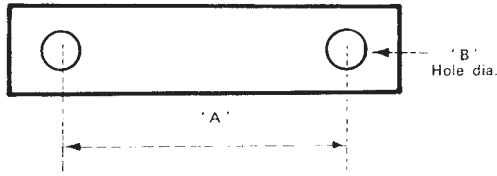
3032  
PLATE WASHER / FIG 32



| Part No. | Size No. | Plate Size    |
|----------|----------|---------------|
|          |          | mm            |
| 3200001A | 1        | 50 x 50 x 6   |
| 3200002A | 2        | 70 x 70 x 6   |
| 3200003A | 3        | 100 x 100 x 6 |
| 3200004A | 4        | 150 x 150 x 6 |
| 3200005A | 5        | 200 x 200 x 6 |
| 3200006A | 6        | 250 x 250 x 6 |
| 3200007A | 7        | 300 x 300 x 6 |

Please specify hole size when ordering  
**Standard finish:** self colour  
 Also available primed red oxide or galvanised.  
 Other plate sizes to order

**3033**  
CONNECTING LINK - FOR USE WITH PIPE CLIPS / FIG 33

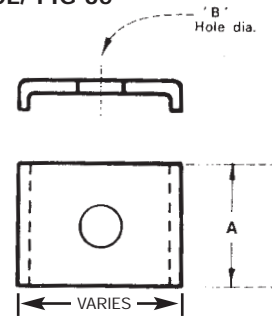


| Part No. | 'C' Material Size |
|----------|-------------------|
|          | mm                |
| 3300001R | 25 x 6            |
| 3300002R | 30 x 6            |
| 3300003R | 40 x 6            |
| 3300004R | 50 x 6            |

PLEASE CONTACT OUR SALES OFFICE FOR PRICE INFORMATION

Please specify A, B, and C, when ordering  
Standard finish: Red oxide.

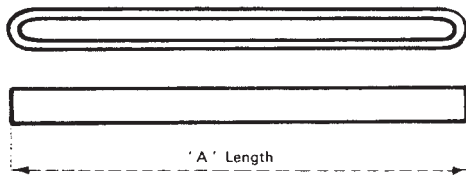
**3035**  
BRIDGE PIECE/ FIG 35



| Part No. | Size No. | A  | B  |
|----------|----------|----|----|
|          |          | mm | mm |
| 3500001Z | 1        | 27 | 8  |
| 3500002Z | 2        | 27 | 12 |
| 3500003Z | 3        | 27 | 14 |
| 3500004Z | 4        | 27 | 17 |

Standard finish: Bright zinc plated.

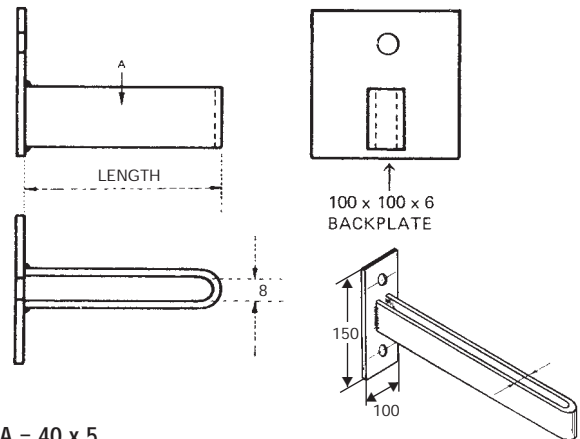
**3034**  
GANG HANGER / FIG 34



| Part No. | Size No. | Material Size | Length |
|----------|----------|---------------|--------|
|          |          | mm            | mm     |
| 3400001R | 1        | 40 x 5        | 150    |
| 3400002R | 1        | 40 x 5        | 230    |
| 3400003R | 1        | 40 x 5        | 300    |
| 3400004R | 1        | 40 x 5        | 450    |
| 3400005R | 1        | 40 x 5        | 600    |
| 3400006R | 1        | 40 x 5        | 750    |
| 3400007R | 1        | 40 x 5        | 1000   |
| 3400008R | 1        | 40 x 5        | 1250   |
| 3400010R | 1        | 40 x 5        | 1500   |
| 3400011R | 2        | 50 x 6        | 150    |
| 3400012R | 2        | 50 x 6        | 230    |
| 3400013R | 2        | 50 x 6        | 300    |
| 3400014R | 2        | 50 x 6        | 450    |
| 3400015R | 2        | 50 x 6        | 600    |
| 3400016R | 2        | 50 x 6        | 750    |
| 3400017R | 2        | 50 x 6        | 1000   |
| 3400018R | 2        | 50 x 6        | 1250   |
| 3400019R | 2        | 50 x 6        | 1500   |

Standard finish: Red Oxide  
Also available galvanised  
Other lengths to order

**3036 & 3036A**  
WALL GANG HANGER / FIG 36



A = 40 x 5

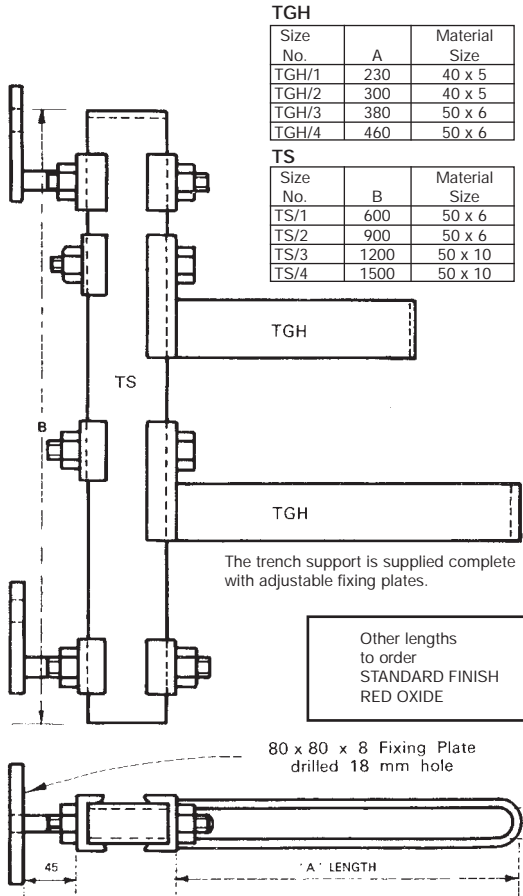
| Part No. | Size No. | Length | Hole Size |
|----------|----------|--------|-----------|
|          |          | mm     | mm        |
| 3600001R | 1        | 150    | 14        |
| 3600002R | 2        | 230    | 14        |
| 3600003R | 3        | 300    | 14        |

A = 50 x 6

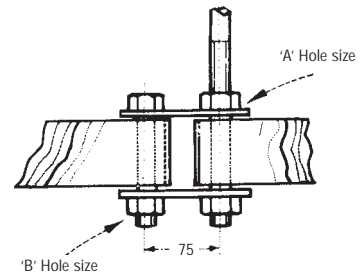
| Part No. | Size No. | Length | Hole Size |
|----------|----------|--------|-----------|
|          |          | mm     | mm        |
| 3600004R | 4        | 150    | 18        |
| 3600005R | 5        | 230    | 18        |
| 3600006R | 6        | 300    | 18        |

Standard finish: Red Oxide.  
Also available galvanised  
Other lengths available upon request  
Fixings: Appropriate fasteners for mounting this product can be found in Section 40

3037  
TRENCH GANG HANGER ASSEMBLY / FIG 37



3038  
GANG HANGER CONNECTOR / FIG 38



For Size 1 Gang Hanger

| Part No. | Size No. | A  | B       |
|----------|----------|----|---------|
|          |          | mm | mm      |
| 3800001R | 1        | 14 | 70 x 12 |

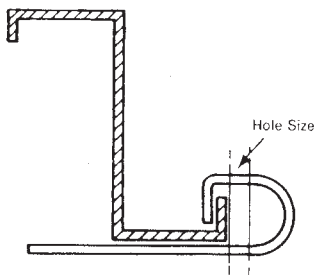
For Size 2 Gang Hanger

| Part No. | Size No. | A  | B       |
|----------|----------|----|---------|
|          |          | mm | mm      |
| 3800002R | 2        | 18 | 90 x 16 |

Each assembly comprises of two connecting plates and 1 bolt and nut

PLEASE CONTACT OUR SALES OFFICE FOR PRICES.

3039  
'Z' PURLIN CLIP / FIG 39

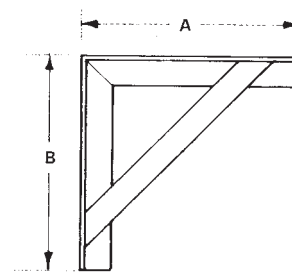


| Part No. | Material Size | Hole Size to suit |
|----------|---------------|-------------------|
|          | mm            | mm                |
| 3900001Z | 25 x 3        | M10               |

PLEASE CONTACT OUR SALES OFFICE FOR PRICE INFORMATION

Standard finish: Bright zinc plated

3055  
CANTILEVER BRACKET / FIG 55



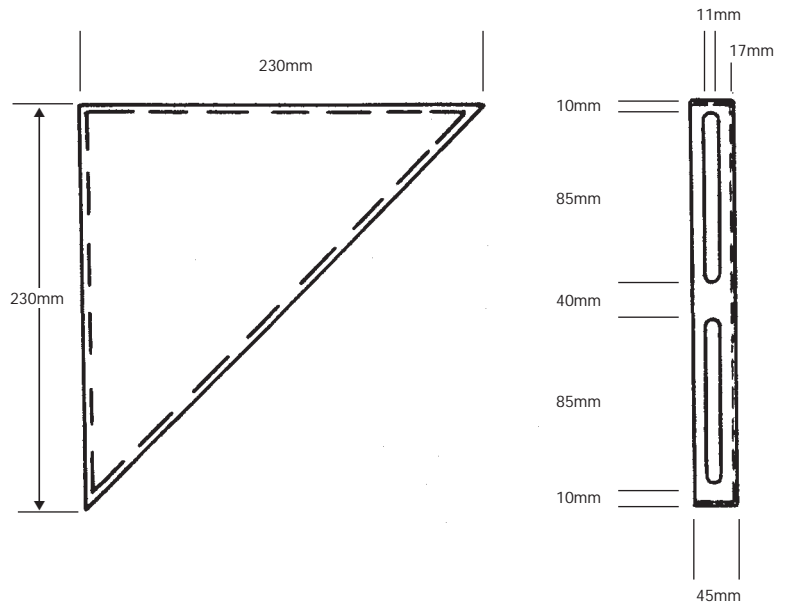
| Angle Sizes |
|-------------|
| mm          |
| 40 x 40 x 6 |
| 50 x 50 x 6 |
| 60 x 60 x 6 |
| 70 x 70 x 6 |
| 80 x 80 x 6 |

PLEASE CONTACT OUR SALES OFFICE FOR PRICES.

**Standard finish:** Red oxide.  
Also available galvanised.  
Lighter and heavier sections as required.  
When ordering please specify A and B dimensions, material required and hole details  
**Fixings:** Appropriate fasteners for mounting this product can be found in Section 40

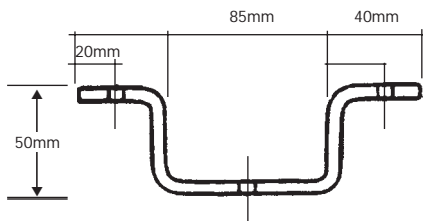
**3060  
PLATE ADJUSTABLE ANGLE BRACKET**

Material 3mm M/S Plate  
Alternative size 150 x 150  
50mm slots  
**Standard finish:** Red oxide.

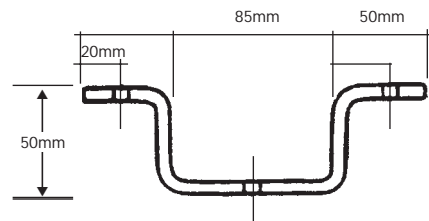


**3065  
CEILING HANGERS FOR DROP RODS**

Size 1



Size 2



| Part No. | Size No. | Material size | Hole |
|----------|----------|---------------|------|
|          |          | mm            | mm   |
| 6500001R | 1        | 40 x 6        | M10  |
| 6500002R | 2        | 40 x 10       | M12  |

**Standard finish:** Red oxide.  
Also available in galvanised.